



**Gwinnett County Solicitor's Office
2011 Budget Presentation
10.7.2010**

2011 Budget Request – Solicitor General

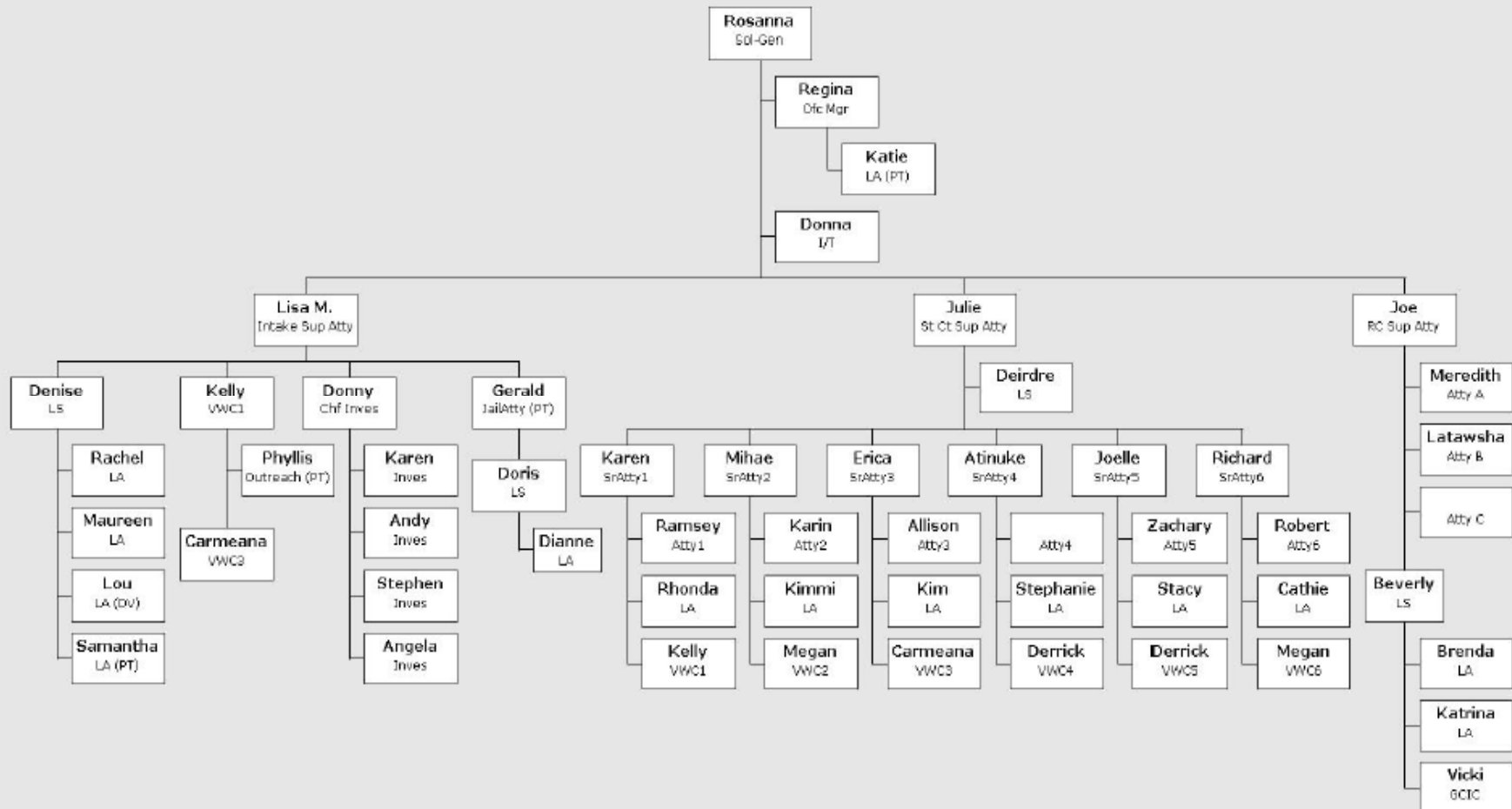
	Total
2010 Adopted Budget	\$ 4,270,971
Contribution to Capital	\$ -
Recon Adj Contribution to Capital	\$ -
Reconciliation Adjustments	\$ (511,856)
2010 Reconciliation Base	\$ 3,759,115
2011 Base Budget	\$ 3,788,978
Difference in budget from 2010	\$ 29,863



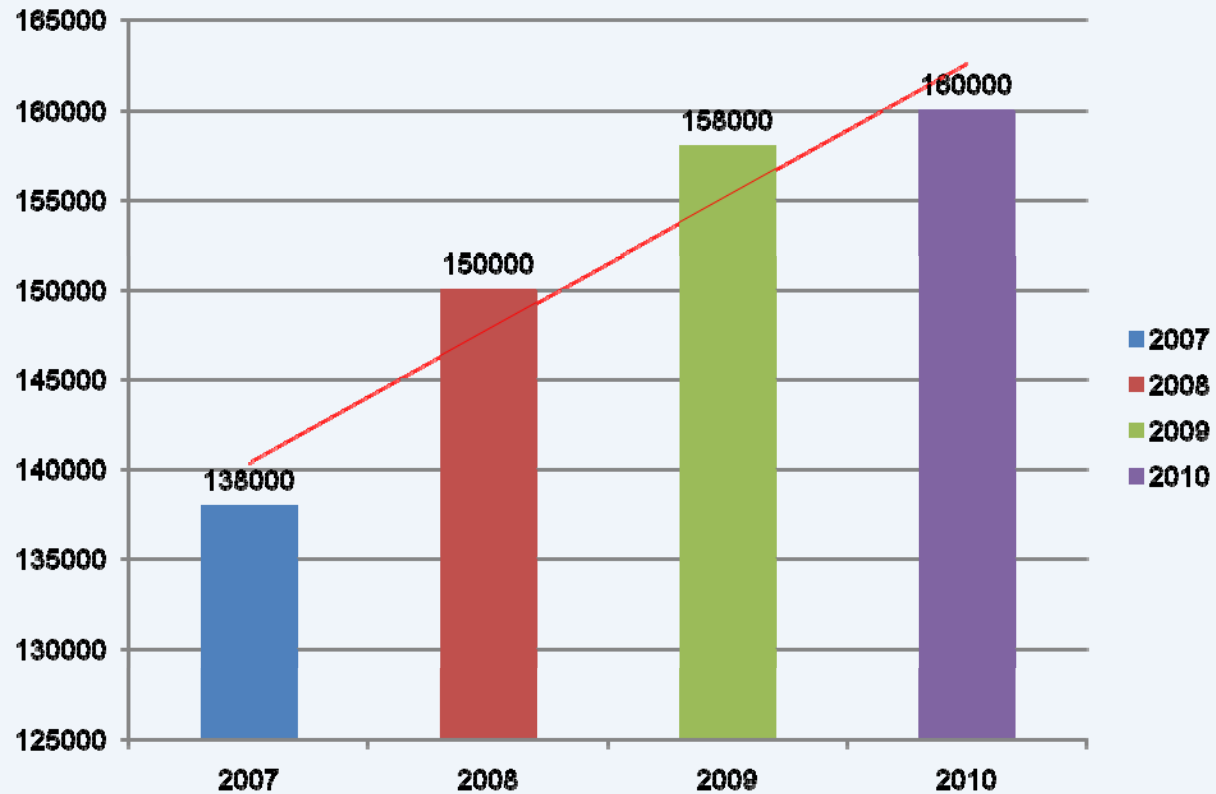
**Gwinnett County Solicitor's Office
2011 Budget Presentation
10.7.2010**

Organizational Chart

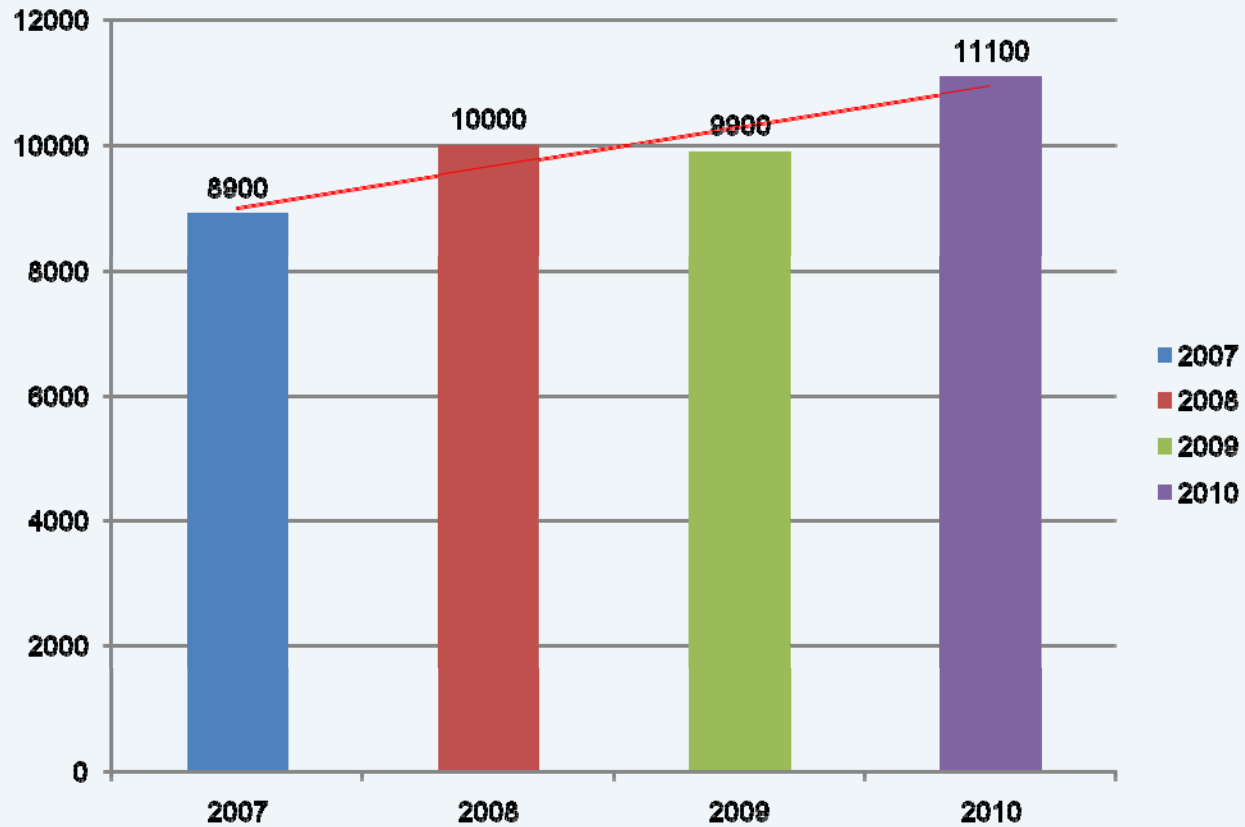
SOLICITOR GENERAL'S OFFICE



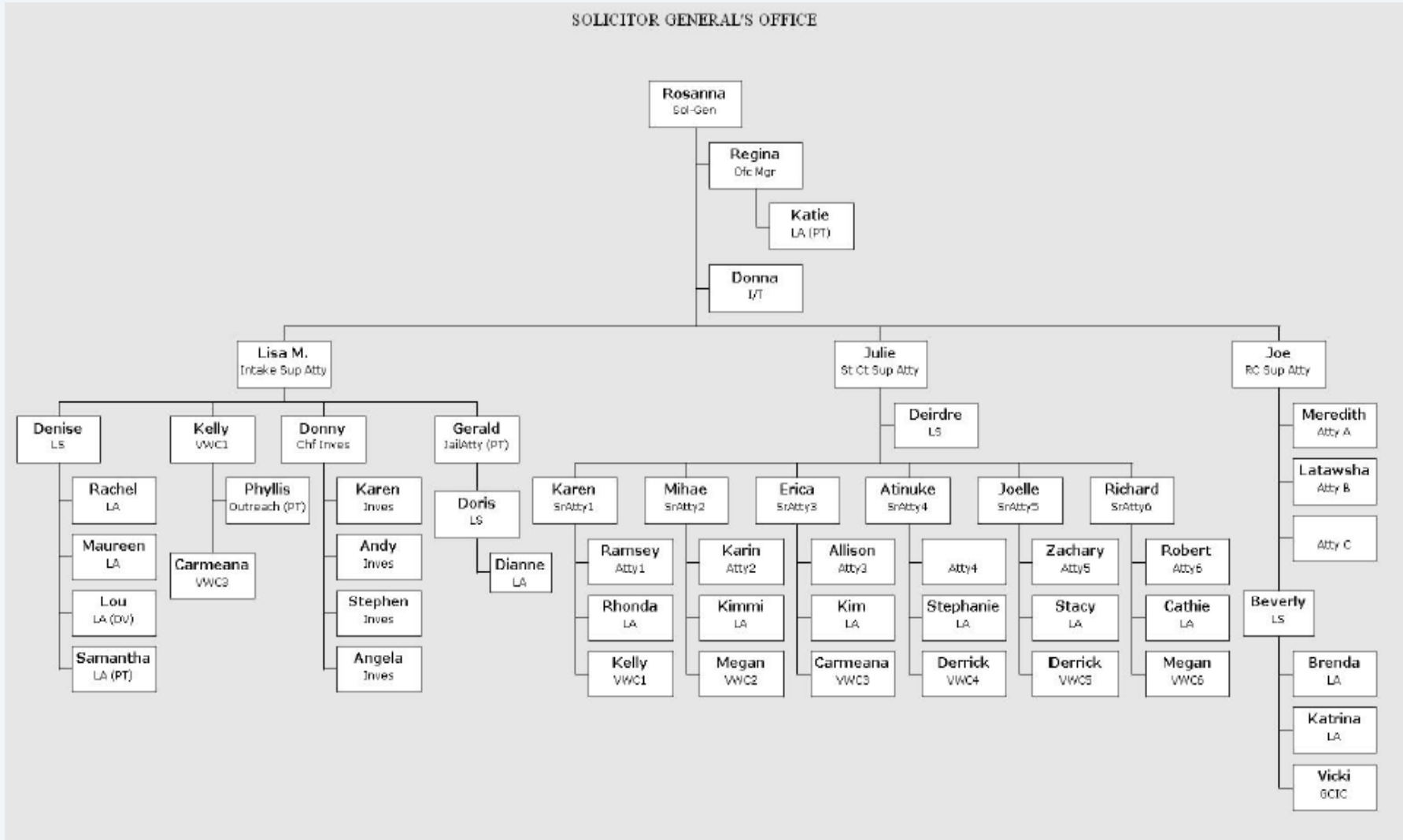
Recorder's Court Citations Received



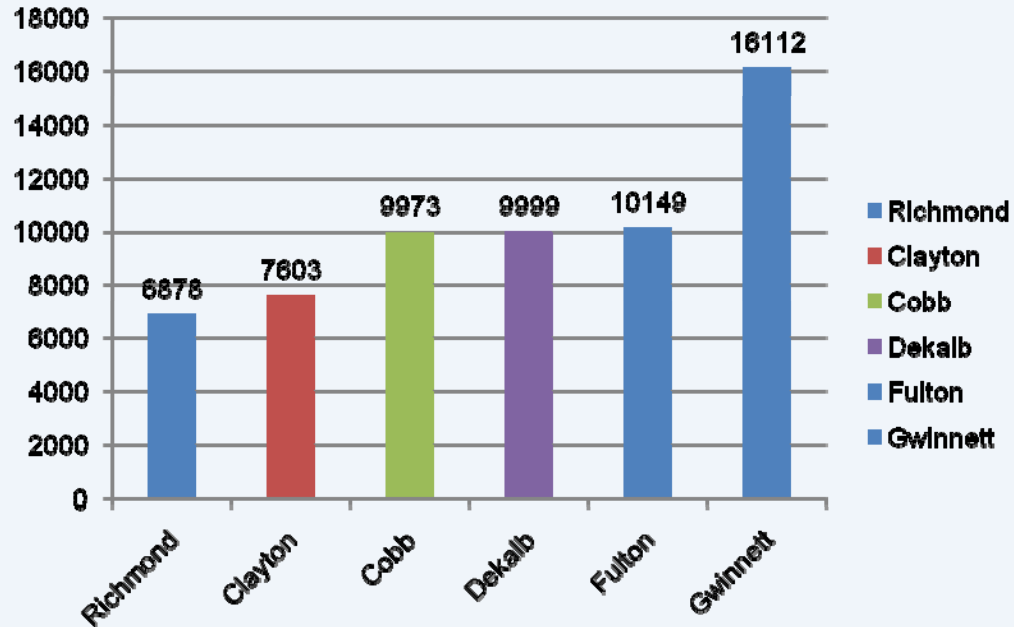
State Court Cases Received



Organizational Chart



Staffing Comparison Per Capita



County	Staff	Population	Per Capita
Gwinnett *	46	789,499	16,112
Dekalb	74	739,956	9,999
Cobb *	70	698,158	9,973
Fulton	100	1,014,932	10,149
Clayton	36	273,718	7,603
Richmond	29	199,486	6,878

State Court Pending Cases

